

# Community Events

## Meeting People

*A subscription scheme has been introduced for entries to the Meeting People column.*

*Subscriptions cost £24 per annum (£1 per issue). If you would like your group to be included in the column, please apply to The Beeston Express for a subscription form using the contact details on page 2.*

### Attenborough & Chilwell Women's Club

Every Wednesday at 7.30pm. Douglas Taylor Room, Attenborough Village Hall. Talks, quizzes, outings, demonstrations and fund raising. Ladies welcome from all areas. Call 0115 925 6498 for more details

**Attenborough Parish Church (St Mary's)** is open for coffee every Tuesday morning, 10.30am until 12 noon. St Mary's is always worth a visit to look around, sit and think or light a prayer candle in our Peace Corner

### Beeston & District Local History Society

Meets 3rd Wednesday every month 7.45pm in the Chilwell Memorial Hall, High Road, Chilwell. Talks by guest speakers of local & general historical interest. New members welcome. Contact 0115 925 8913 or 0115 922 6971 for details

### Beeston in Transition

2<sup>nd</sup> Tuesday of the month from 10.30am to 12 noon at Flying Goose Café, 33 Chilwell Road, Beeston. Discuss ways to reduce costs to yourself and planet earth. Find friends to help make the transition to a low energy lifestyle. For details, contact David on 925 1018 or Mary on 854 2994

### Beeston Players

Meet every Monday at 7.30pm, Beeston Library, Foster Avenue, Beeston. Whether you are looking to act or help with costumes, sound effects, lighting, props, scenery, or front of house, just pop along to meet us, call Debbie on 0115 939 8417 or visit [www.beestonplayers.org.uk](http://www.beestonplayers.org.uk)

### Beeston Probus Club

1st and 3rd Monday each month in the Girlguiding Beeston Division HQ, West End, Beeston. 10am for 10.30am. A social club for retired professional and business men. Contact Neville Bostock on 0115 922 6971 for more details

### Bramcote History Group

Meets 3rd Monday each month, (except December). 8pm in St. Michael's Church Centre, Church Street, Bramcote. Varied program of historical talks and other events. Visitors welcome. For details call 0115 925 1491

**Bramcote Women's Institute** Monthly meetings are held on the second Monday at Bramcote Memorial Hall, Church Street, Bramcote, starting at 7.30pm. Speakers, quizzes and day trips. New members welcome, all women and girls over the age of 16 may join. Contact Secretary Jean Garner on 0115 922 6196 for more details.

### Chilwell Afternoon Townswomen's Guild

Meets 4th Tuesday of each month (not August) at 2pm at Chilwell Road Methodist Church, Beeston. New members welcome. Call Mrs J Hughes on 0115 930 6451 for details

**Chilwell Circle of Friends - for the Over 50s** Meets on Monday afternoons at Grove Court, Central Avenue, Chilwell between 2pm and 4pm. Speakers, tea and entertainment. Phone 0115 925 1483 for more details

### Christ Church Chilwell Bereavement Team

A Christian organisation willing to visit the bereaved in the parish of Chilwell. For more details, contact the Bereavement Co-ordinator, Christ Church Office, 6 College Road, Chilwell or phone 0115 922 2809

**Disability Matters** A local group for people with disabilities. Meet monthly, usually first Tuesday, in the Catholic Church Hall, Foster Avenue, Beeston (wheelchair accessible). 1.45pm - 3.45pm. (Dates may change due to Bank Holidays). Call Christine on 0115 925 1483 for details

### The Friendship Club

Meets alternate Tuesdays, 2.30pm - 3.30pm at the United Reformed Church, Boundary Road, Beeston. Open to men and women over 50. Contact Mrs Underwood on 0115 922 4326 for more details

### Hemlock Gardening Club

Meets 3rd Thursday of each month at 7.30pm at Memorial Hall, Church Street, Bramcote. New members very welcome. Annual subs £8.50, visitors £1. Contact 0115 925 2507 for more details

### Inham Nook Café Church

Sundays 3.30pm - 4.30pm, at the centre on Pearson Avenue, Chilwell. Need a change on Sunday afternoon? Join us for tea/coffee, cakes and chat. All free!

### Inham Nook Methodist Leisure Hour

Wednesdays between 2.30pm and 4pm. Inham Nook Methodist Church. Fellowship meetings and guest speakers. Contact Mrs Irene Davies on 0115 925 0712 for details

### Mind Alert - Now in our 28th year!

Thursdays between 2pm and 4pm. The Conservative Club, Station Road, Beeston. Talks, quizzes, tea dances, games afternoons and outings. Contact May on 0115 854 5898 for details

**New Beginnings** An art group specifically for those below pensionable age but who are either disabled or no longer able to work due to chronic illness or health problems. The premises are wheelchair friendly. Parking is available. We meet every Wednesday, 1.30pm to 3.30pm at Beeston Oasis Church, Union Street, Beeston. Cost is £2 per session. Professional tutoring is available every other week. Contact Anthea on (0115) 913 9974 or 07814 318 402 for more details.

### The Rotary Club of Beeston

Mondays at 6.45pm, Beeston Fields Golf Club. We welcome people from businesses and professions and use our skills to help others who are less fortunate. For details contact David Biggs at [secretary@beestonrotary.org](mailto:secretary@beestonrotary.org) or Barbara Hadfield on tel: 07787 512 813

### The Helpful Bureau

Every Thursday between 10am and 3pm. St Helen's Church Hall, Stapleford. M2M, Chiropodist, Massage, 2-course Lunch, Speakers, Trips. For information, call Margaret Bowen on 0115 949 1175

### Toton Ladies Group

Meet every 2<sup>nd</sup> and 4<sup>th</sup> Wednesday of the month (except August) at Toton Methodist Church at 7.30pm. Speakers at most meetings, new members welcome. Admission £2 includes coffee and biscuits. Call Mrs Bainborough on 0115 973 3483 for more details

### Two O'Clock Club

Every Thursday, 2pm - 4pm. Chilwell Road Methodist Church, Beeston. A varied programme of talks and outings. Admission £1. Visitors welcome. Contact 0115 925 9199 for details

## Exhibition at Beeston Library

July 5 – July 30

during Library opening hours  
Beeston Library, Foster Avenue  
Admission: free

*The Beeston Express apologises for running this article again in its entirety – but it should be a fascinating exhibition!*

THIS exhibition focuses on Beeston and the Nottingham area during the time of the Cold War.

Included is a set of detailed Nottingham maps drawn up by the Russians, plans and pictures of a secret bunker on Edwards Lane, and chilling diagrams of projected fallout over Nottingham should a bomb have been detonated there.

Older historical maps of Beeston / Nottinghamshire will be added to the exhibition for contrast.

A spokesman said: "What is fascinating for many people is to see their own house, workplace and street name printed in Russian on a military map.

"The Russians knew the width of the roads, the height of the bridges, the depth of the rivers, the names of the streets. And they knew the exact location and purpose of every building of possible strategic importance, even those which had been omitted from Ordnance Survey maps.

"For over fifty years, before during and after the Cold War, the Soviet military undertook

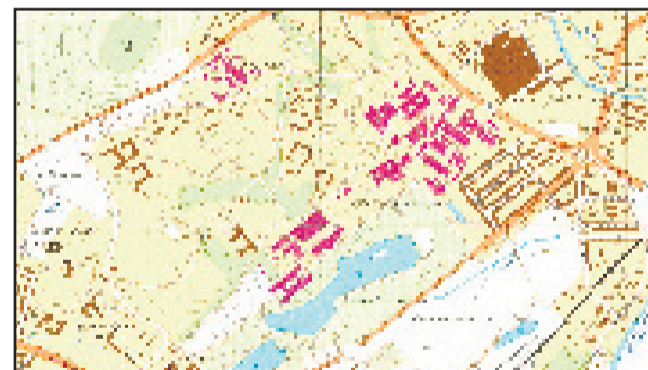
the most comprehensive global survey ever attempted and created detailed, accurate maps of practically every country in the world. For many African and Asian countries these maps are, even today, the most reliable or only open source of good quality topographical information.

"The top secret enterprise was on a vast scale, driven by military imperatives and executed to the highest technical standards. Today, little is known about how the organisation was structured and how such incredible results were achieved."

The Beeston area has several strategic sites not shown on Ordnance Survey maps, including BAE Royal Ordnance Factory and the Garrison at Chilwell. The University, Boots and the former Plessey/Ericsson sites are numbered on the maps and described in a glossary.

Roger Grimes is displaying the Russian maps and pictures inside the secret bunker.

For more information, call Emma Parry at Beeston Library on 925 5168, or email [emma.parry@nottscc.gov.uk](mailto:emma.parry@nottscc.gov.uk)



All familiar landmarks were mapped - in Russian.

## Cat Meetings

THE following Community Action Team (CAT) meetings are scheduled to take place:

### Bramcote

Monday, July 5  
Bramcote Memorial Hall,  
Church Street, Bramcote at  
7pm

### Bramcote View

Tuesday, July 6  
Bramcote Memorial Hall,  
Church Street, Bramcote at  
7pm

### Chilwell East

Tuesday, July 6  
College House Junior  
School, Cator Lane,  
Beeston at 7pm

### Stapleford North

Thursday, July 8  
Pasture Road Community  
Church, Stapleford at 7pm

### Beeston Central

Wednesday, July 14  
Queens Road Methodist  
Church at 7pm

### Chilwell West

Thursday, July 15  
Inham Nook Methodist  
Church Hall,  
Pearson Avenue,  
Chilwell at 7pm



## Need a New Interest?

Join T.O.F.S (Toton Over 50s)

- Walking • Ten Pin Bowling • Art Lessons •
- Interesting Talks on Varied Topics •



Something for Everyone  
No joining fee and a warm welcome for all

For further details, call either:  
**Graham:** (0115) 917 0956 or **Peter:** (0115) 973 0696